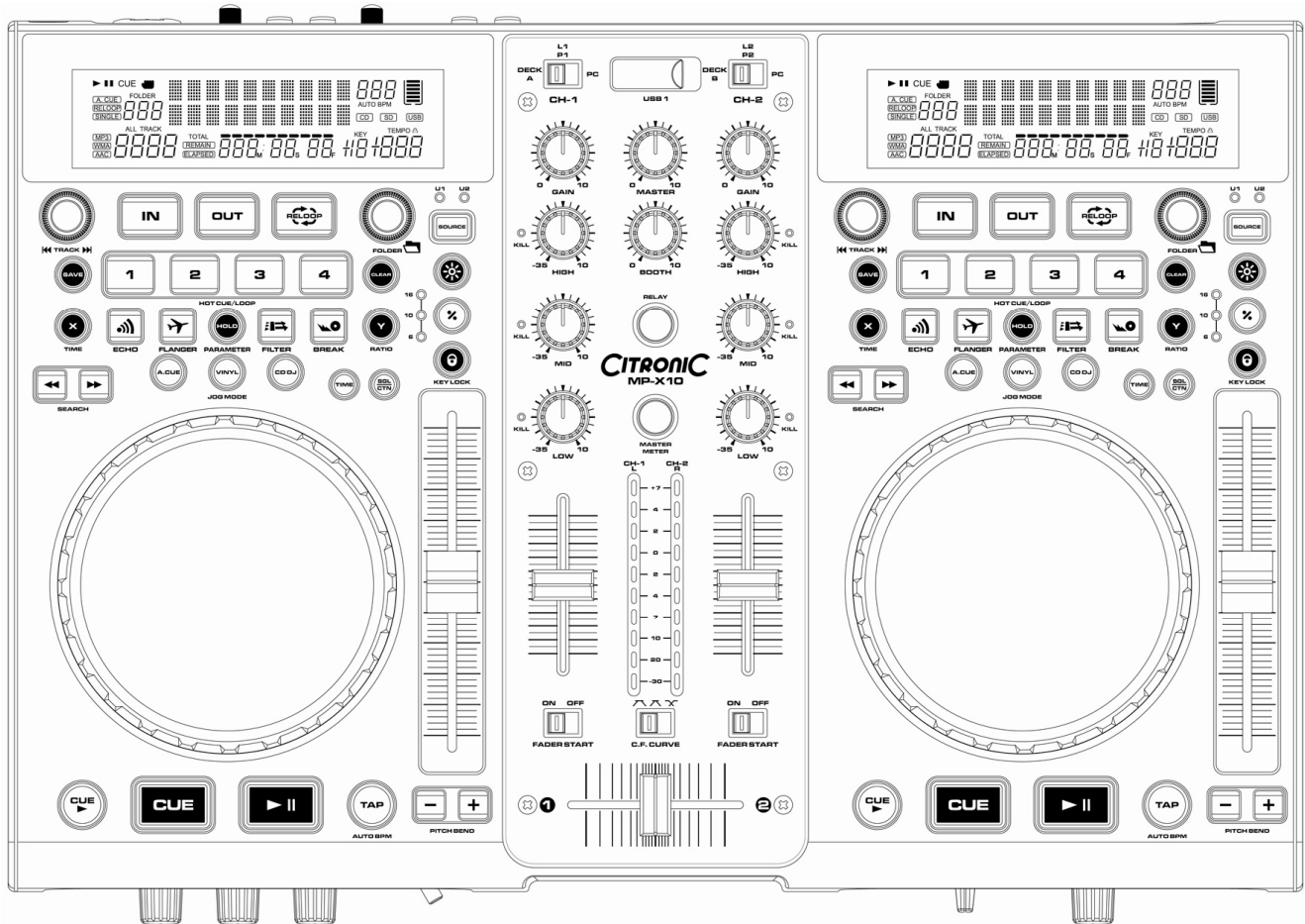


# CITRONIC®

## MP-X10



## OWNERS MANUAL

Version 3.0

---

## Safety information

1. Read these instructions.
2. Keep these instructions.
3. Heed all warnings.
4. Follow all instructions.
5. Do not use this item near moisture.
6. Clean only with dry cloth.
7. Do not block any of the ventilation openings. Install in accordance with the manufacture's instructions.
8. Do not install near any heat sources such as radiators, stoves or other items (including amplifiers) that produce heat.
9. Do not defeat the safety purpose of the polarized plug. The wide blade is provided for your safety. If the provided plug does not fit into the item or the mains socket, consult an electrician for replacement.
10. Protect the power cord from being walked on or pinched particularly at plug, convenience receptacles, and point where they exit from the item.
11. Only use attachments/accessories specified by the manufacturer.
12. Use only with a stand, tripod, bracket or table suitable for support.
13. Unplug this item during lightning storms or when unused for long periods of time.
14. Refer all servicing to qualified service personnel. Servicing is required when the item has been damaged in any way, such as power supply cord or plug is damaged, liquid has been spilled or objects have fallen onto the item, the item has been exposed to rain or moisture, does not operate normally, or has been dropped (Note: Accidental or cosmetic damage is not covered by the items 12 month warranty)
15. Please keep the unit in a safe environment.
16. Do not store anything on top of the item



**CAUTION**  
DO NOT OPEN  
RISK OF ELECTRIC SHOCK



**CAUTION:** To reduce the risk of electric shock, do not remove any cover. No user-serviceable parts inside. Refer servicing to qualified service personnel only.

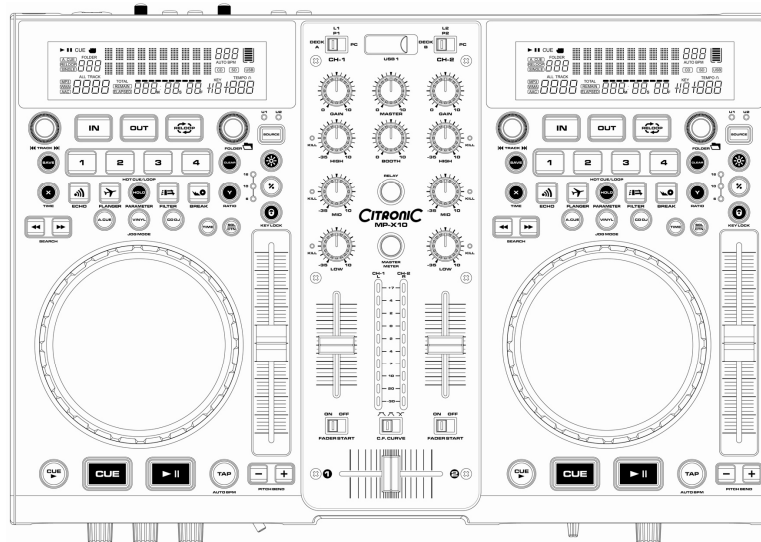


The lightning flash with arrowhead symbol within the equilateral triangle is intended to alert the user to the presence of un-insulated "dangerous voltage" within the product's enclosure that may be of sufficient magnitude to constitute a risk of electric shock.



The exclamation point within the equilateral triangle is intended to alert the user to the presence of important operation and maintenance (servicing) instructions in the literature accompanying this appliance.

# CITRONIC MP-X10



## Main features:

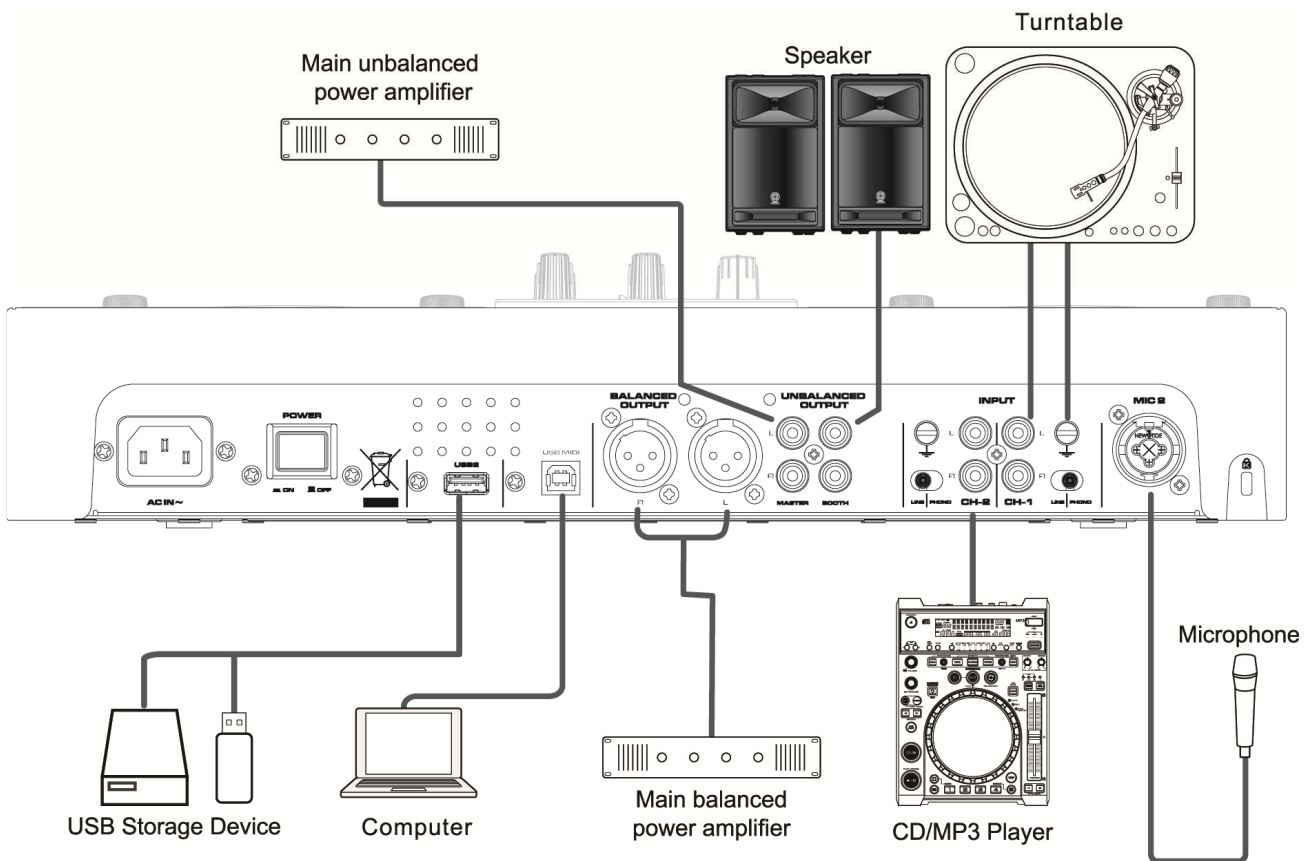
- 1 x USB front and 1 x USB rear inputs which can be read by both players simultaneously
- 2 x Large VFD displays which can be viewed from wide angles
- Plays MP3 files from either USB on the front or rear ports on either side of the player
- Easy-to-use folder and file search
- MP3/WAV compatible (ID3 tags)
- Instant start (sound is produced immediately when the play button is pressed)
- 3 modes of operation (Vinyl, CD DJ and Auto cue scratch)
- Interactive "AQ-touch" sensitive jog wheel
- Jog wheel pitch bend  $\pm 100\%$
- Pitch controlled  $\pm 6, 10$  &  $16/100\%$
- Key (Pitch) lock function
- Single and continuous play options
- DSP effects: echo, flanger, filter, scratch and brake
- X & Y Parameters controlled by jog wheel to maximize the sound effects
- Seamless loop with fine tune adjustment
- 4 x Memory banks to store cue points or loops
- 3 band control with push button kill for each channel
- Adjustable cross fader curve and cross fader reverse option
- Fader start option
- 2 x external phono/Line Inputs
- Microphone tone controls
- Headphone monitoring with cue pan and volume controls
- Memory backup, defaults to last setting
- Auto/manual tap BPM
- Relay playback
- Part or full MIDI control by the PC
- 19" Rack mountable optional

## Included accessories

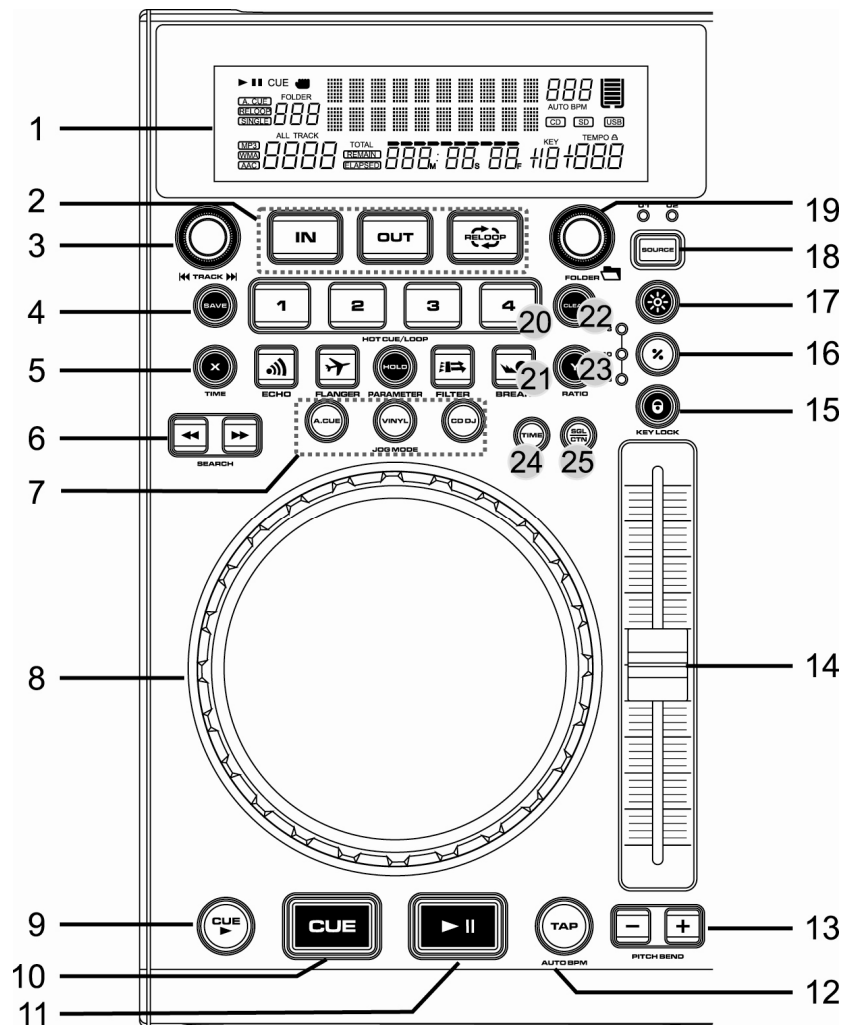
- 1 x UK power cable
- 1 x EU power cable
- 1 x USB lead
- 1 x User manual
- 19" Rack mount kit
- 1 x Virtual DJ LE installation disc

## Setup

1. Before making or changing the connections, switch off the power and disconnect the power cord from the AV outlet.
2. We recommend to use high quality shielded audio cables when connecting input/output devices as it makes a huge difference in sound reproduction quality.
3. Do not use excessively long cables. Be sure the plugs and jacks are securely fastened. Loose connections cause hum, noise or intermittence that can damage your speakers.
4. Connecting to a computer – the controller will be automatically recognised by both Windows based PC / Laptops operating Windows XP SP2 or later and MAC O/S 10.4 or later as a generic MIDI controller without the need to install drivers (Note the DB software only works with Windows based operating computers). You can then use any DJ software with MIDI mapping features to program in the functions to operate on screen (See Page 20)



## General Functions and Controls – Top panel



1. **VFD DISPLAY** – This high quality VFD display indicates all the functions, as they are occurring. The display icons are explained in the VFD display section (page 12)
2. **SEAMLESS LOOP:**
  - a. **IN** – Pressing the IN button sets a CUE POINT without music interruption. This button is also used to set the starting point of a SEAMLESS LOOP.
  - b. **OUT** - This button is used to set the ending point of a LOOP. A LOOP is started by pressing the IN button to select the starting point and the OUT button to set the LOOP ending point. The LOOP will continue to play until the OUT button is pressed once again.
  - c. **RELOOP** – This button will highlight when a SEAMLESS loop has been made. Every time you press this button it will return the music to the last set CUE point and continue to play in a loop.
    - i. Pressing the RELOOP button will instantly reactivate the seamless loop mode. To exit loop, press the OUT button. RELOOP will appear in the VFD display when the RELOOP function is available.
    - ii. You can fine tune the SEAMLESS LOOP by holding the RELOOP button and using the jog wheel to set the exact OUT point. Press RELOOP again to set the IN point. When you have finished press the RELOOP button to exit.
  - d. **SEARCH** – Press these buttons when in loop mode to shorten by 1/64, 1/32, 1/16, 1/8, 1/4, 1/2, 1/1 or lengthen the loop by 2/1, 4/1, 8/1, 16/1.

- 
3. **TRACK SEARCH** – This knob has three functions:
    - a. You can use this to select the next or previous track by turning the knob forwards or backwards.
    - b. Holding down and turning the knob forwards or backwards will rapidly skip through the tracks on your USB memory device by 10 tracks per click.
    - c. Press the TRACK KNOB will read the ID3 tags on the file. Switch between: File name / Title name / Artist / Album / Genre on the VFD display.
  
  4. **SAVE** – This button has 3 functions in relation to the BANK BUTTONS (see *PART 20*)
    - a. Press this button to activate save mode. The SAVE button LED will glow when active. When activated press your desired BANK button to store your CUE point or playing SEAMLESS LOOP.
    - b. To store your CUE points or LOOPS that are in the BANK memory to your USB device for use in the future press and hold the SAVE button for 2 seconds. The SAVE button LED will flash to confirm it has saved.
    - c. **RECALL MEMORY** – The MP-X10 can store 4 programmed CUE point or LOOPS per track on the USB device (The memory points on the USB are depending on available memory space). These settings can be recalled at any time by first pressing the SAVE button so it is highlighted. Then use the FOLDER and TRACK knobs to search for the track you have the memory points stored. Once found the VFD display will read "RECALLING" for a few seconds while it loads the memory in to the desired bank. When ready for use the BANK buttons will be highlighted.
  
  5. **X PARAMETER** – (Time parameter) You can set the time parameter which effects the sound produced by the digital effects by pressing the X button and rotating the JOG WHEEL clockwise to increase the length of the effect or anti-clockwise to decrease the level of the effect. Activate the HOLD button and rotate the JOG WHEEL to set the default value. **Note:** For the above when the JOG WHEEL has stopped moving the ratio will return to the default setting.
  
  6. **SEARCH** – These buttons allow you to fast forward or rewind the track when in PLAY or CUE mode or to shorten or length a loop when in LOOP mode.
  
  7. **JOG MODE** – There are three modes of operation:
    - a. **VINYL** - When set to VINYL, touch the surface of the JOG WHEEL and rotate clockwise or anti-clockwise to activate the scratch effect.
    - b. **CD DJ** - When set to CD DJ use the JOG WHEEL to bend the pitch of the track. Clockwise to speed up the track anti-clockwise to slow down the speed of the track.
    - c. **A.CUE SCRATCH**
      - i. IN PLAYBACK MODE - While music is playing touch the JOG WHEEL to return the track to last set CUE point and activate scratch mode (set by using the IN button) hold down and move the JOG WHEEL clockwise and anti-clockwise to use the scratch effect. When you release the track will continue playing from the last set CUE point.
      - ii. IN CUE MODE - While the music is not playing (CUE mode), tapping the JOG WHEEL will start the playback. Hold your finger on the JOG WHEEL to continue playback. When your finger is released the music will stop and go back to the last CUE point.
-

---

## 8. JOG WHEEL

- a. The JOG WHEEL will act as a frame search control when the track is in PAUSE or CUE mode, allowing you to set a starting point or CUE point.
  - b. The JOG WHEEL also works as a pitch bend during playback. Turning the side of the JOG WHEEL (in any JOG MODE) and turning clockwise will increase the pitch percentage up to 100%, and turning the wheel counterclockwise will decrease the pitch percentage down to -100%. The pitch bend will be determined by how long you turn the JOG WHEEL continuously.
  - c. The JOG WHEEL can be used to control the TIME and RATIO parameters for the digital effect.
9. **CUE PLAY** – Press CUE PLAY button to return to the last set CUE point and continue playing immediately. You can also tap the button continuously to create a BOP effect.
10. **CUE** – Can be used in a number of ways:
- a. Pressing the CUE button during playback immediately stops the current track and returns the music to the last set CUE point.
  - b. In PAUSE mode pressing and holding the CUE button plays the track from the last set CUE point. Releasing the CUE button will return the track to the last set CUE point.
  - c. Pressing and holding CUE button will start the track. If PLAY/PAUSE button is pressed during this time the track will continue to play when CUE button is released
11. **PLAY/PAUSE** – Pressing PLAY/PAUSE button will start the track instantly. Pressing this button again will pause the current track.
12. **TAP** - This button is used for manual BPM. When in manual BPM mode, tap this button to the beat of the music Readout will be displayed on the VFD display. Hold the TAP button for 1 second to activate AUTO BPM.
13. **PITCH BEND** - The desired pitch of track increases when button "+" is held and decreases when button "-" is held. The music returns to the original pitch when either button is released.
14. **PITCH SLIDER** - This slider is used to adjust the playback pitch percentage. Move the slider down to speed up the music and move the slider up to slow down the music.
15. **KEY LOCK** - This button turns on or turns off the KEY LOCK function. This function allows you to use the PITCH SLIDER to speed up or slow down playback speed without altering the tonal pitch of the track.
16. **PITCH RANGE** - Press the button to choose pitch percentage adjustment  $\pm 6\%$ ,  $\pm 10\%$ ,  $\pm 16\%$ , and  $\pm 100\%$ .
17. **PITCH ON/OFF** – Press this button to turn the PITCH SLIDER ON/OFF.
18. **SOURCE SELECT** - Use this button to read from USB PORT 1 or USB PORT 2.
19. **FOLDER SEARCH**- Turn FOLDER knob to search for the desired folder.
20. **MEMORY BANKS 1~4** - These buttons are used to store either four CUE points or four SEAMLESS LOOPS. Press the desired bank button to set a CUE point (Highlight RED) or make a loop using the IN/OUT buttons and save to your desired bank button (Highlighted GREEN). To delete any CUE points or LOOPS from the memory press CLEAR followed by the BANK BUTTON you want to delete (For more information go to *PART 4* "SAVE BUTTON")

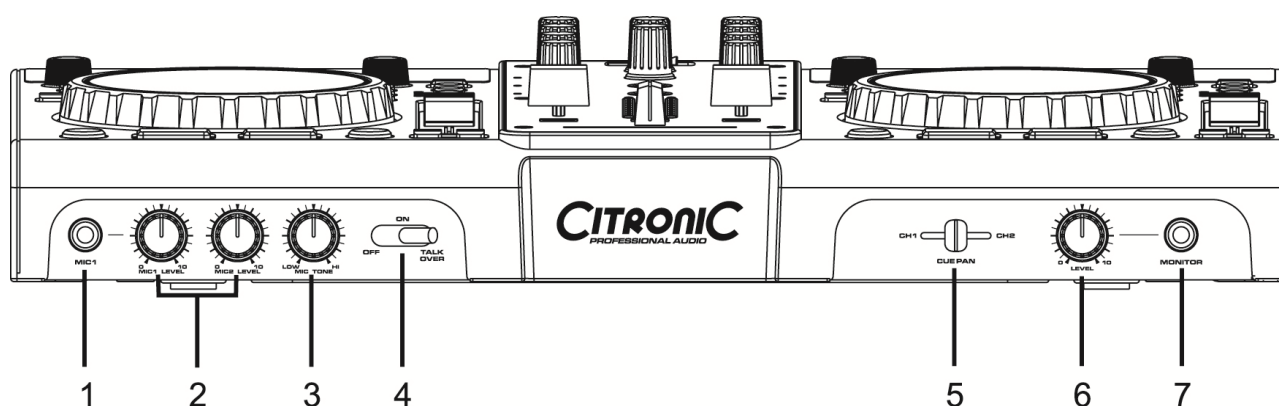
---

## 21. EFFECTS AND HOLD

- a. EFFECTS** - The below buttons add effects to the music. The volume and length of the effects can be controlled by a combination of the PARAMETER BUTTONS and JOG WHEEL.
- i. ECHO** – This button is used to add an ECHO effect to your output signal.
  - ii. FLANGER** – The FLANGER effect distorts the output signal and creates an effect similar to the frequency phasing in and out of each other.
  - iii. FILTER** – The FILTER effect tweaks the original sound to add different tonal definition.
  - iv. BRAKE** – The BRAKE effect is the both the start speed and stop speed of the track simulating that of a turntable. The START time is controlled by the X Parameter and the STOP time is controlled by the Y Parameter. Depending on which operating mode the player is in determines how the effect is triggered:
    - 1.** When in VINYL mode hold the top of the JOG WHEEL (Note: It is advised to hold the side of the JOG WHEEL with one hand while doing this as any movement from the JOG WHEEL at this point will cause the unit to go in to scratch mode)
    - 2.** When in CD DJ mode press PLAY/PAUSE button to activate.
- b. HOLD** – Activating the HOLD button in combination with one of the above TIME or RATIO buttons allows you to lock the default level of either parameter. When the desired level is set, deactivate the hold button for continued normal use.
- 22. CLEAR** – Press CLEAR button (LED on) or hold the CLEAR button to select the BANK buttons you would like to clear.
- 23. Y PARAMETER** – (RATIO parameter) You can set the ratio parameter by selecting this button and rotating the JOG WHEEL clockwise to increase the level of the effect or anti-clockwise to decrease the level of the effect **Note:** For the above when the JOG WHEEL has stopped moving the ratio will return to the default setting.
- 24. TIME** - The button will switch the time value described in the TIME METER between ELAPSED playing time and TRACK remaining time.
- 25. SGL/CTN** - This function allows you to choose between single track play or continuous track play (all tracks in order with no delay between tracks). This function also operates in RELAY mode. With this button you can also switch auto cue on and off, by holding the button down for 1 second.

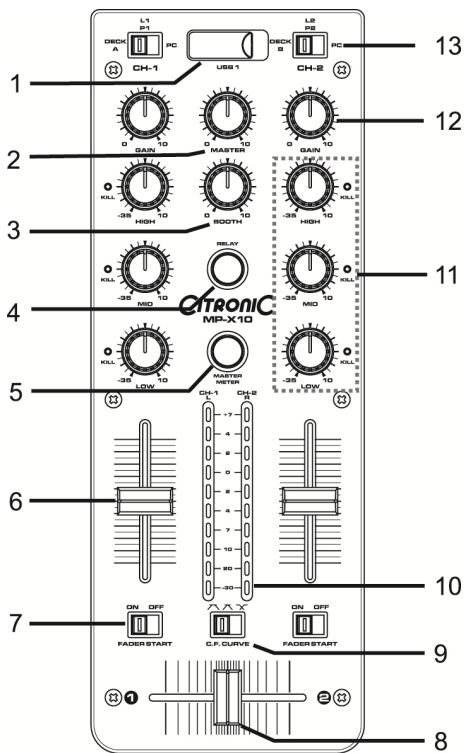


## General Functions and Controls – Front Panel



- 1. MIC 1 JACK** – This jack socket is used to connect a microphone to the mixer. Connect your microphone via 6.3mm jack. The volume output level for microphone will be controlled by its own respective VOLUME control.
- 2. MIC LEVEL CONTROL** – These rotary knobs controls the output volume of MICROPHONE 1 & 2. However master volume is controlled by the MASTER VOLUME CONTROL on the mixer.
- 3. MIC TONE CONTROL** – This rotary knob control the frequency response of the Microphone.
- 4. MIC ON/OFF/TALKOVER SWITCH** – When switched left the MIC is off, middle is ON and to the right is TALKOVER position where the sound level for everything other than that from the MIC will decrease to around 20dB.
- 5. CUE PAN CONTROL** – This slider allows you to monitor a cued track as well as the current playing track from your headphones. When you move the CUE PAN to the left position you will only hear the Channel 1 signal playing. If you move the CUE PAN to the right you will only hear the Channel 2 signal playing. If the CUE PAN is set to the centre position you can hear both Channels playing.
- 6. CUE LEVEL CONTROL** – This rotary knob is used to adjust the headphone volume. Turn the knob in a clockwise direction to increase the headphone volume and anti clockwise to decrease.
- 7. HEADPHONE SOCKET** – This jack socket is used to connect your headphones to the device allowing you to monitor the cue channel. Always be sure the CUE LEVEL VOLUME is set to minimum before you plugging in the headphones.

## General Functions and Controls – Mixer Panel

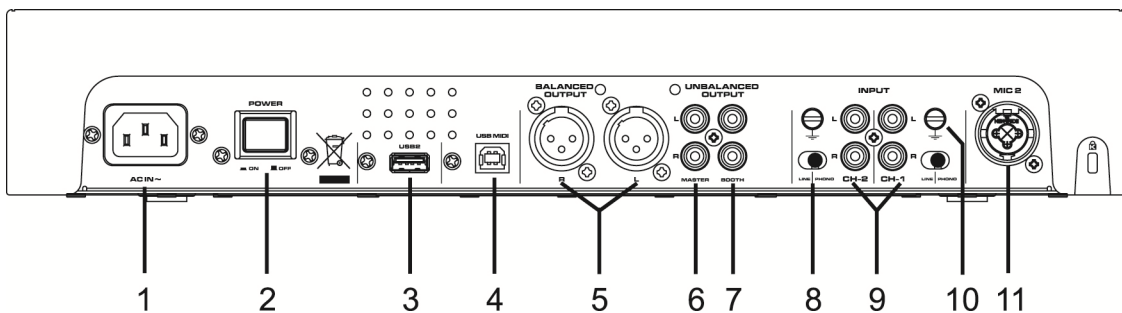


- 1. USB PORT 1** - This is the USB port where you insert your USB 2.0 mass storage device (up to 32Gb).
- 2. MASTER VOLUME CONTROL** - This rotary knob is used to control the master output level (volume). To avoid distorted output try to maintain an average output signal level +4 dB. **NOTE:** Be sure this volume control is always set to zero before turning the unit on.
- 3. BOOTH CONTROL** - This rotary knob is used to adjust the level of the BOOTH outputs.
- 4. RELAY** - This button is used to switch the RELAY on and off. The left and right players will automatically be in single play mode when the relay function is activated. On the contrary, the left and right players will automatically be in the continuous play mode.
- 5. MASTER METER** - This button is used to choose either master level or the individual channel level on the CHANNEL LEVEL display indicators.

- 6. CHANNEL FADER** - These faders are used to control the output signal of any source assigned to its particular channel. However, master volume is controlled independently by the MASTER VOLUME CONTROL.
- 7. FADER START** - These ON/OFF switches activate the FADER START function for each channel. When activated the CROSSFADER can be used to stop and start a track automatically. EG: If the CROSSFADER is in position CH1, the CH2 cued track will automatically start playing if the CROSSFADER is then moved towards CH2. CH2 will stop playing and go back to the last cued point if the CROSSFADER is then moved back to CH1.
- 8. CROSSFADER** - This fader is used to blend the output signals of CHANNELS 1 and 2 together. When the fader is in the full left position, the output signal of CHANNEL 1 will be controlled by the master volume level. The same fundamentals will apply for CHANNEL 2. Sliding the fader from one position to another will vary the output signals of channels 1 and 2 respectively. When the CROSSFADER is set in the centre position, the output signals of both the CHANNEL 1 and CHANNEL 2 will be even.
- 9. CF CURVE** - Allows you to adjust the "shape" of the CROSSFADER response from a gentle curve for smooth long running fades, to the steep pitch required for top performance cut and scratch effects.
- 10. LEVEL METER** - The dual LED's indicators are used to detail either the master output level, a combination of the master output level or the PGM monaural level.
- 11. CHANNEL EQ CONTROL** - Both of the channels include a three-band signal EQ. These controls are used to increase or decrease the HI, MID or LOW frequencies by turning the desired knob from left to right. You can adjust the signal output between -35dB and +10dB. You can also activate the KILL EQ by pressing either the HI, MID or LOW knobs to reduce the frequency to the lowest level "-35dB". A red LED will indicate that KILL mode is active.

12. **CHANNEL GAIN CONTROL** – This adjustment is used to adjust an audio signal input gain for a channel. Never use the gain control to adjust output volume. Set the gain level properly will ensure a clean output signal.
13. **SOURCE SELECTOR** – These switches are used to select the input source assigned to each channel. Each channel may only be assigned one input source at a time.
  - a. CH1 & CH2 both set to PC – the entire unit works as a MIDI controller.
  - b. CH1 set to PC & CH2 set to DECK B – DECK A works as a MIDI controller and the mixer works internally with DECK B.
  - c. CH1 set to PC & CH2 selected to L2/P2 – DECK A works as a MIDI controller and the mixer works internally with L2/P2.

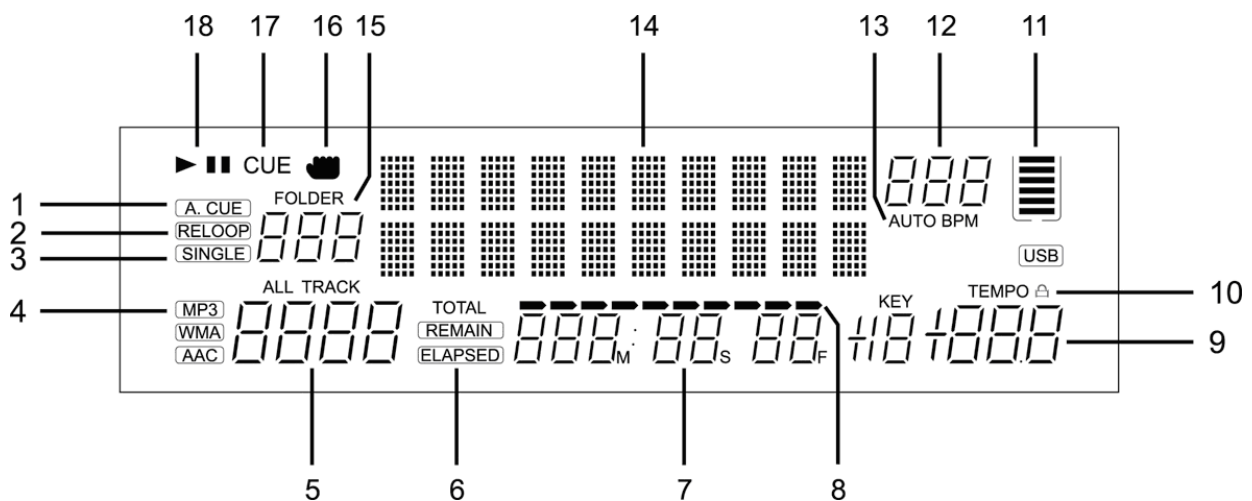
## General Functions and Controls – Rear Panel



1. **POWER INLET (AC IN)** – Use the provided IEC power lead to connect to an AC power source.
2. **POWER SWITCH** – Turn the unit power ON/OFF
3. **USB 2 PORT** – This is the USB port where you insert your USB mass storage device for playing MP3 files.
4. **USB MIDI PORT** – Use the provided USB cable to connect the Citronic MP-X10 to a PC or Laptop computer by a USB2.0 connection. The computer will detect it straight away as an external sound card (No need to install any drivers). Once installed you may then play music on your computer and it will play through MP-X10 through the MASTER output or BOOTH output.
5. **BALANCED XLR MASTER OUTPUT JACKS** – L & R 3-pin balanced XLR jacks send a high current balanced output signal. These jacks should be used when connecting to an amp or other audio equipment with a balanced input, or whenever you will be running a signal line greater than 4.5m.
6. **UNBALANCED MASTER OUTPUT** – The RCA jacks send a low current unbalanced output signal. These jacks should only be used for shorter cable runs to signal processors, looping to another mixer or when connecting to small powered speakers.
7. **BOOTH OUTPUT JACKS** – RCA jacks to connect to your active booth monitors.

8. **LINE/PHONO SELECTOR SWITCH** – These switches are used to change the voltage line levels of there respected LINE/PHONO RCA inputs jacks. When connecting turntables that do not have a built-in pre-amp to these jacks be sure the corresponding switch is in the PHONO" position, and when using line level input devices be sure the switch is in the LINE position. **NOTE:** Always be sure main power is shut off before changing the position of the Line Level Selector Switch.
9. **CHANNEL LINE/PHONO INPUT CONNECTORS** – Connect turntables without a built-in pre-amp to the PHONO input and other devices such as. CD players, Tape Decks, MP3 devices and other line level instruments must be connected to the LINE input. Ensure that you switch the LINE/PHONO switch to select the input. The input level volume is controlled by the channel GAIN control.
10. **GND (GROUND TERMINAL)** – Be sure to connect turntable ground leads to either or both of the two available ground terminals. This will reduce the humming and popping noises associated with magnetic phono cartridges.
11. **MICROPHONE 2 JACK** – This combo jack will accept a standard 6.3mm jack plug or XLR 3-pin balanced male plug. The volume output level for microphone will be controlled by its own respective VOLUME control on the front panel.

## General Functions and Controls – VFD Display



1. **A.CUE INDICATOR** – This will indicate if the player is in AUTO CUE mode or not. Press and hold the SGL/CTN for 1 second to turn AUTO CUT ON/OFF
2. **RELOOP INDICATOR** - Appears when LOOP is engaged or ready to be engaged.
3. **SINGLE INDICATOR** - This indicates that the track is in single play mode, the track will play once and return to CUE mode. If the single indicator is not on, the unit is in continuous mode.
4. **FILE TYPE** – Indicates if that the USB device has MP3 files on it.
5. **TRACK DISPLAY** - This indicator describes which track is currently cued or is playing.
6. **REMAIN / ELAPSED INDICATOR** - When REMAIN is indicated in the VFD display the TIME METER will show the current track's remaining time. When ELAPSED is indicated in the VFD display the TIME METER will show the current track's elapsed time.

- 
7. **TIME METER** - These indicators will detail the current minutes, seconds, and frames. The meter will display either the elapse or remaining time of a track. The display time will depend on the selected time function. The selected time function will be displayed on the left side of the TIME METER as remaining track time or elapsed track name.
  8. **TIME BAR INDICATOR** - This bar gives a visual approximation of a track time. This bar will begin to flash when a track is ending.
  9. **PITCH INDICATOR** - This meter will display the pitch percentage applied by the pitch slider.
  10. **KEY LOCK** - This will indicate the KEY LOCK function is active.
  11. **MEMORY BUCKET** - This indicator serves two functions. The bucket symbol details the cue memory status, a full bucket outline indicates the cue memory is full. The five bars in the memory bucket detail the digital buffer. Each bar indicates 2 seconds.
  12. **BPM METER** - This meter will display the BPM (beats per minute) of the current track. Or the manual BPM that you set when you press the TAP button.
  13. **AUTO BPM** - This will indicate that the AUTO BPM counter is active.
  14. **CHARACTER DISPLAY** - This will display the name of the track and album when an MP3 track is loaded.
  15. **FOLDER DISPLAY** - This indicates which folder you are in.
  16. **TOUCH INDICATOR** - This appears when anything touches the JOG WHEEL.
  17. **CUE INDICATOR** - This indicator will glow when the unit is in CUE mode and will flash every time a new CUE POINT is set.
  18. **PAUSE INDICATOR** - The PLAY indicator will glow when the unit is in PLAY mode, The PAUSE indicator will glow when the unit is in PAUSE mode.

---

## Internal Menu

Hold down the FOLDER knob for 2 seconds to enter the internal menu, and turn FOLDER knob to search through the different menu.

Turn the TRACK knob or JOG WHEEL to change the submenus

Save and exit internal menu, turn the FOLDER knob to F. Exit & Save and press the TRACK knob. The display indicates "Saving"

1. **PLAYLIST** - Normal / Title / Artist / Album/ Genre (for USB). Use the DBbuilder software (see next section) in order to use the PLAYLIST type:
  - a. **Normal:** This is the default setting. Tracks are played corresponding to the established hierarchical data structure
  - b. **Title:** Browse by the tracks by title name in alphabetical order
  - c. **Artist:** Browse by the tracks by artist name in alphabetical order
  - d. **Album:** Browse by the tracks by Album name in alphabetical order
  - e. **Genre:** Browse by the tracks by Genre type in alphabetical order
2. **Repeat Mode** - 3 different modes: Play All, REPEAT/FOLDER/TRACK
3. **MIDI CH** - Setup MIDI Channel from 1 to 16 (DECK A - MIXER - DECK B)
4. **MIDI SETUP**
  - a. TAP = HOLD/TOGGLE
  - b. I/O = Hide/DIS. (Hide/display MIDI I/O value)
5. **MIXER SETUP**
  - a. **Mixer** (Mixer console operates independently when in PC mode allowing for smooth switch of inputs with no sound level drop. This mode is ideal for users who switch between different inputs on playback)
  - b. **MIDI** (In PC Mode mixer send MIDI commands to controls software. Sound card is controlled by PC. This mode is ideal for users who use MIDI mode all the time)
6. **Cross Fader**
  - a. **LOCK** - Locks the CROSS FADER to the middle of the two channels
  - b. **UNLOCK** - CROSS FADER is active and can switch the MASTER OUTPUT from CH1 to CH2
7. **Cross Fader Reverse**
  - a. **ON** - Reverse the CROSS FADER
  - b. **OFF** - Normal operation
8. **Display Time** - 0.5 ~ 12.0 sec. (Line name start/stop time adjustment)
9. **Scroll Speed** - 50 ~ 2000 msec. (Line name move time adjustment)
- A. **Sensitivity** - Touch wheel sensitivity adjustment (Adjustment range is -20~+20)
- B. **Intensity** - VFD Brightness (Brightness range is 1~4)
- C. **CUE Level** - Change the AUTO CUE level (Level range is -36~-78dB)
- D. **Bit Rate** - Display ON/OFF
- E. **Version** - CXX (Control version) DSPXX (DSP version)
- F. **Load Default** - Press TRACK Knob to enter load defaults.
- G. **EXIT & SAVE** - Exit & Save setting to next power on (Press the TRACK knob to fast exit & save in any operating mode)

### **Note:**

**Save:** U1/U2, PITCH ON/OFF, PITCH RANGE, SGL/CTN, AUTO CUE, TIME MODE, HOLD, KEY LOCK, EFFECTS ON/OFF, PLAYLIST, REPEAT MODE, MIDI CHANNEL, MIDI SETUP, MIXER SETUP, MIXER, CROSSFADER, CROSSFADER REVERSE, DISPLAY TIME, SCROLL SPEED, SENSITIVITY, INTENSITY, A.CUE LEVEL, DISPLAY

**Defaults:** U1/U2(U1), PITCH (OFF), PITCH RANGE (10%), SGL/CTN(CTN), AUTO CUE(ON), TIME MODE (REMAIN), HOLD(OFF), KEY LOCK(OFF), EFFECTS(OFF), PLAYLIST (NORMAL), REPEAT MODE(ALL), MIDI CHANNEL(1-2-3), MIDI SETUP(TAP=HOLD, I/O=HIDE), MIXER SETUP (MIXER) CROSSFADER(UNLOCK), CROSSFADER REVERSE(Off), DISPLAY TIME(3 seconds), SCROLL SPEED(400ms), SENSITIVITY(0), INTENSITY(4), A.CUE LEVEL(-48dB), Bit rate display(ON)

---

## Data Management

### **DATABASE BUILDER:**

Database management software for the MP-X10 scans your USB device and writes contents files making it easy for you to search by Title, Artist, Album or Genre.

**Installation:** Refer to the following figures for installing database management software on your computer.

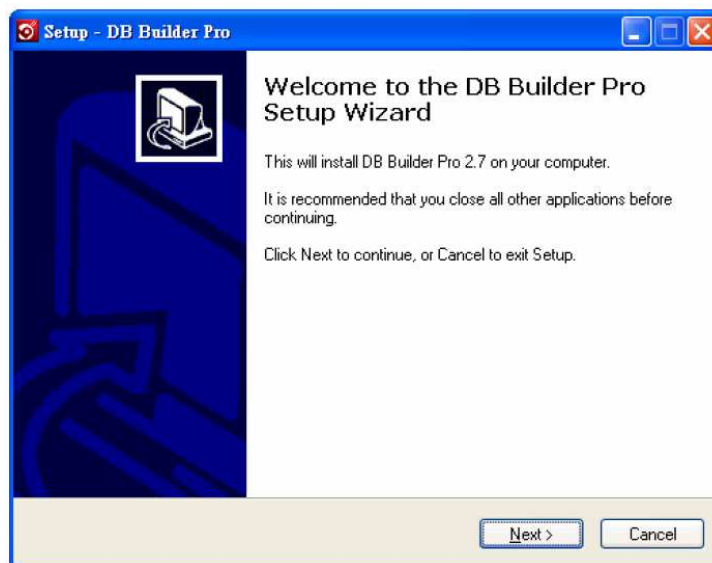
CPU: Intel Pentium 4, 1GHz processor or above, Intel Centrino Mobile Technology 1.6GHz

RAM: 512MB

DISC SPACE: 100mb needed

OS: Microsoft Windows XP SP3, Vista SP2 or Windows 7 (NOTE: Software is not MAC compatible but controller is)

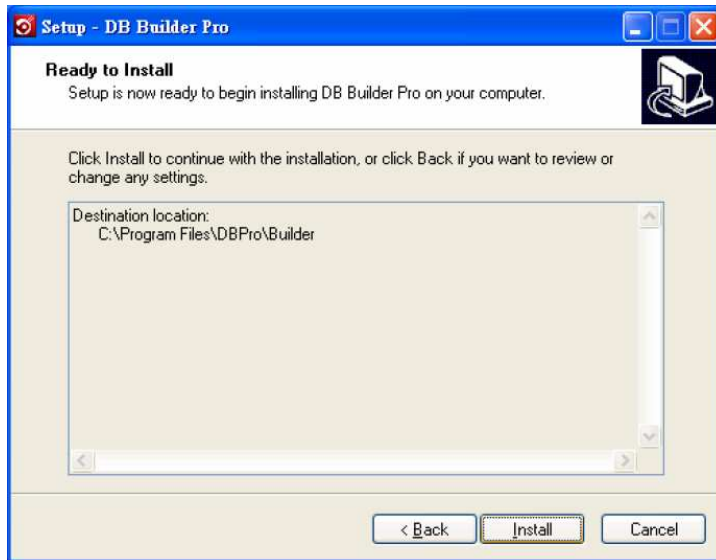
Download available at [www.citronic.com](http://www.citronic.com)



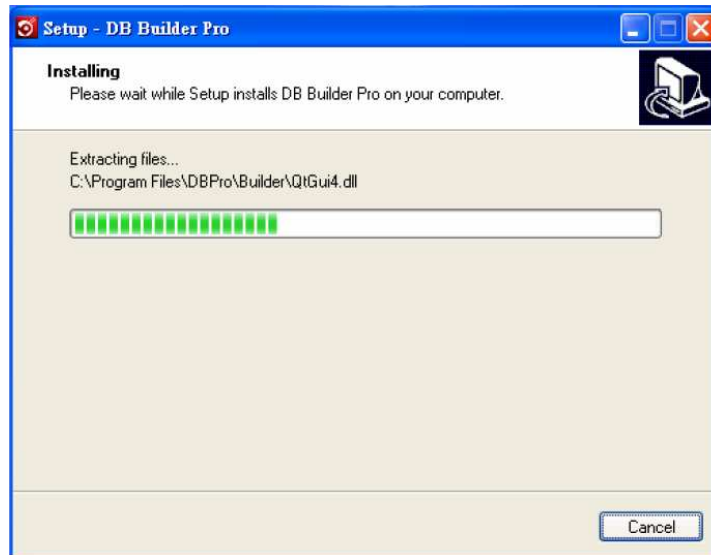
STEP 1: Click next >



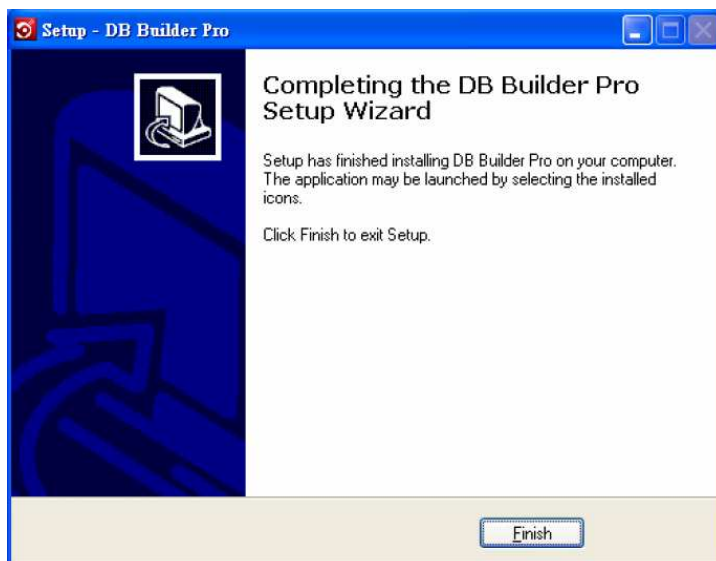
STEP 2: Click next >



STEP 3: Click Install



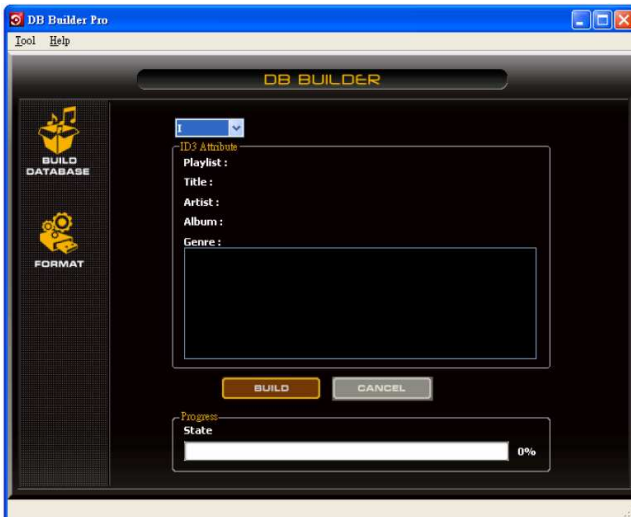
STEP 4: Processing



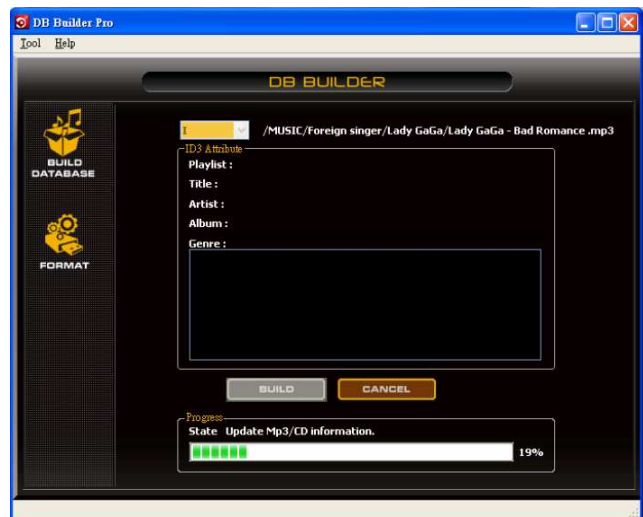
STEP 5: Click finish



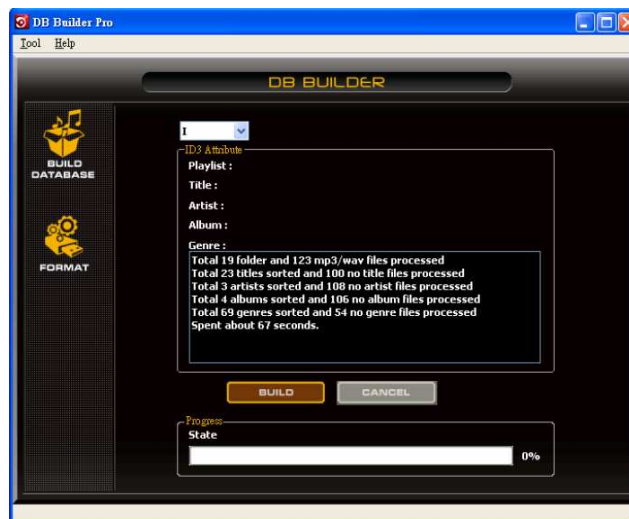
**Scan and create:** Refer to the following process for scanning and creating database. NOTE: For Vista users please right click the icon and select "RUN AS ADMINISTRATOR"



STEP 1: Select the desired storage device and click build



STEP 2: Processing



STEP 3: Complete

NOTE: Please re-create the database builder whenever you change the contents of your USB device.

### PLAYLIST OPERATION:

1. Hold the FOLDER knob down for 3 seconds to enter the internal menu.
2. Rotate the FOLDER knob to find the PLAYLIST option.
3. Turn the Track knob to select "Normal/ Title/ Artist/ Album/ Genre" and press the TRACK knob to confirm the selection.
4. The MP-X10 will then read the data files created and display your tracks in the order you desire.

## Specification:

### 1. GENERAL SECTION

PRODUCT: MP-X10 Dual USB MP3 Player + Digital Mixer  
POWER SOURCE: AC 100-240V, 60/50Hz  
POWER CONSUMPTION: 21 WATTS  
DIMENSIONS: 420mm (W) X 298.8mm (D) X 89mm (H)  
WEIGHT: 4.42kg

### 2. INPUT/OUTPUT IMPEDANCE & SENSITIVITY: (EQ FLAT, MAXIMUM GAIN, LOAD=100KΩ)

#### a. INPUT IMPEDANCE AND REFERENCE INPUT LEVEL

LINE: 47K OHM /-14dBV (200mV) +/-0.1dB  
PHONO: 47K OHM /-50dBV (3.16mV) +/-0.1dB  
MIC: 10K OHM /-50dBV (3.16mV) +/-0.1dB

#### b. OUTPUT IMPEDANCE AND LEVEL

MASTER: 1K OHM /0dBV (1V) +/-3dB  
MASTER BAL(load=600 ohm): 600 OHM /+4dBm (1.23V) +/-3dB (BETWEEN HOT AND COLD)  
BOOTH: 1K OHM /0dBV (1V) +/-3dB  
PHONES (load=32 ohm) 33 OHM /0dBV (1V) +/-2d

### 3. FREQUENCY RESPONSE: (EQ FLAT, MAXIMUM GAIN, LOAD=100KΩ)

LINE: 20 - 20K Hz +/-2dB  
PHONO: 20 - 20K Hz +2/-3dB (RIAA)  
MIC: 20 - 20K Hz +2/-3dB

### 4. THD + N: (EQ FLAT, MAXIMUM GAIN, w/20kHz LPF, A-WEIGHTED, LOAD=100KΩ)

LINE: LESS THAN 0.06% @ 1 KHz  
PHONO: LESS THAN 0.08% @ 1 KHz  
MIC: LESS THAN 0.15% @ 1 KHz

### 5. MAXIMUM INPUT: (1KHz, THD=1%, EQ FLAT, MAXIMUM GAIN, LOAD=100KΩ)

LINE: MORE THAN +0dBV  
PHONO: MORE THAN -36dBV  
MIC: MORE THAN -36dBV

### 6. MAXIMUM OUTPUT: (1KHz, THD=1%, EQ FLAT, MAXIMUM GAIN, LOAD=100KΩ)

MASTER: MORE THAN +15dBV (5.62V) LOAD=100KΩ  
PHONES: MORE THAN +4dBV (1.6V) LOAD=32Ω

### 7. S/N RATIO: (MAXIMUM GAIN, EQ FLAT, W/20KHz LPF, A-WEIGHTED)

LINE: MORE THAN 73dB  
PHONO: MORE THAN 73dB  
MIC: MORE THAN 63dB

### 8. CROSSTALK: (MAXIMUM GAIN, EQ FLAT, W/20KHz LPF, A-WEIGHTED, MASTER=0dBV OUTPUT)

LINE, PHONO: MORE THAN 63dB @1KHz BETWEEN L AND R CHANNEL  
MORE THAN 70dB @1KHz BETWEEN CHANNELS

### 9. FADER KILL: (MAXIMUM GAIN, EQ FLAT, W/20KHz LPF, A-WEIGHTED, MASTER=0dBV OUTPUT)

CHANNEL FADER: MORE THAN 70dB AT 1KHz  
CROSSFADER: MORE THAN 70dB AT 1KHz

Cont.

**10. TONE, EQ**

MIC: -14 +/-3dB AT 100Hz  
 -12 +/-3dB AT 10 KHz  
 CHANNEL: 10 +/-2dB, BELOW -30dB AT 70Hz  
 10 +/-2dB, BELOW -30dB AT 1 KHz  
 10 +/-2dB, BELOW -30dB AT 13 KHz

**11. CHANNEL BALANCE** Within 2dB

**12. TALKOVER:** -20dB +/- 2dB

**13. USB HOST PLAYER: (SIGNAL FORMAT: MP3, 128KBPS)**

- a. **OUTPUT LEVEL:** 0dBV +/-2dB (TCD782 TRK16, GAIN MAXIMUM, EQ FLAT)
- b. **FREQUENCY RESPONSE:** 17-16KHz +/-2dB (TCD781 TRK1,4,16, SET GAIN TO 0dBV OUT, EQ FLAT)
- c. **THD+N:** LESS THAN 0.08% (TCD782 TRK16, GAIN MAXIMUM, EQ FLAT, W/20KHz LPF, A-WEIGHTED)
- d. **SN RATIO:** MORE THAN 70dB (TCD782 TRK2,8, SET GAIN TO 0dBV OUT, EQ FLAT, W/20KHz LPF, A-WEIGHTED)
- e. **LR SEPARATION:** MORE THAN 63dB AT 1KHz (TCD782 TRK2,9,11, SET GAIN TO 0dBV OUT, EQ FLAT, W/20KHz LPF, A-WEIGHTED)




**14. USB HOST PLAYER SECTION: (SIGNAL FORMAT: MP3, 128KBPS)**

- a. **OUTPUT LEVEL:** 0dBV +/-2dB (TCD782 TRK16, GAIN MAXIMUM, EQ FLAT)
- b. **FREQUENCY RESPONSE:** 17-16KHz +/-2dB (TCD781 TRK1,4,16, SET GAIN TO 0dBV OUT, EQ FLAT)
- c. **THD+N:** LESS THAN 0.08% (TCD782 TRK16, GAIN MAXIMUM, EQ FLAT, W/20KHz LPF, A-WEIGHTED)
- d. **SN RATIO:** MORE THAN 70dB (TCD782 TRK2,8, SET GAIN TO 0dBV OUT, EQ FLAT, W/20KHz LPF, A-WEIGHTED)
- e. **LR SEPARATION:** MORE THAN 63dB AT 1KHz (TCD782 TRK2,9,11, SET GAIN TO 0dBV OUT, EQ FLAT, W/20KHz LPF, A-WEIGHTED)
- f. **RECORING & PLAYBACK:** (LINE 1KHz, -14dBV INPUT, GAIN MAXIMUM) OUTPUT: 6dBV (2V) +/-2dB, THD+N: LESS THAN 0.08% (GAIN MAXIMUM, W/20KHz LPF, A-WEIGHTED)

**15. MP3 FORMAT**

<b>USB Format</b>	File System	FAT 12/16/32
	Applicable file extensions	mp3. MP3. mP3. Mp3
	Max. number of Folders	999
	Max. number of files	max. 999 files
<b>MP3 Format</b>	MPEG 1 Layer 3 standard (ISO/IEC 11172-3), which provides for single channel ('mono') and two-channel ('stereo') coding at sampling rates of 32 and 44.1kHz.	32/40/48/56/80/96/112/128/160/192/224/256/320 kbps
		Xing/VBRI VBR
	MPEG 2 Layer 3 standard (ISO/IEC 13818-3), which provides for similar coding at sampling rates of 16, 22.05 and 24 kHz.	32/40/48/56/64/80/96/112/144/160 Kbps
		Xing/VBRI VBR
	MPEG 2.5 Layer 3 standard, which provides for similar coding at sampling rates of 8, 11.025 and 12 kHz.	32/40/48/56/64/80/96/112/144/160 Kbps
		Xing/VBRI VBR

# MIDI MAP

FUNCTION	Type	FUNCTION CODE (DECK A)	NOTE	SHIFT (Hold TAP)	FUNCTION CODE (DECK B)	NOTE	SHIFT (Hold TAP)	FUNCTION CODE (CENTER DECK)	NOTE	SHIFT (Hold TAP)	ACTION
FOLDER 	SW/ENC	05/17		44/56	05/27		44/66				7FH : ON 00H : OFF
◀ TRACK ▶	SW/ENC	01/16		40/55	01/26		40/65				7FH : ON 00H : OFF
IN	SW/LED	02/02	D-1	41	02/02	D-1	41				7FH : ON 00H : OFF
OUT	SW/LED	03/03	D#-1	42	03/03	D#-1	42				7FH : ON 00H : OFF
RELOOP 	SW/LED	04/04	E-1	43	04/04	E-1	43				7FH : ON 00H : OFF
SOURCE SELECT/U1	SW/LED	06/06	F#-1	45	06/06	F#-1	45				7FH : ON 00H : OFF
SAVE	SW/LED	07/07	G-1	46	07/07	G-1	46				7FH : ON 00H : OFF
1	SW/LED (RED)	08/08	G#-1	47	08/08	G#-1	47				7FH : ON 00H : OFF
1	LED (GREEN)	30	C3		30	C3					7FH : ON 00H : OFF
2	SW/LED (RED)	09/09	A-1	48	09/09	A-1	48				7FH : ON 00H : OFF
2	LED (GREEN)	31	C#3		31	C#3					7FH : ON 00H : OFF
3	SW/LED (RED)	0A/0A	A#-1	49	0A/0A	A#-1	49				7FH : ON 00H : OFF
3	LED (GREEN)	32	D3		32	D3					7FH : ON 00H : OFF
4	SW/LED (RED)	0B/0B	B-1	4A	0B/0B	B-1	4A				7FH : ON 00H : OFF
4	LED (GREEN)	33	D#3		33	D#3					7FH : ON 00H : OFF
CLEAR	SW/LED	0C/0C	C0	4B	0C/0C	C0	4B				7FH : ON 00H : OFF
	SW/LED	0D/0D	C#0	4C	0D/0D	C#0	4C				7FH : ON 00H : OFF
Time X	SW/LED	0E/0E	D0	4D	0E/0E	D0	4D				7FH : ON 00H : OFF

ECHO	SW/LED	0F/0F	D# 0	4E	0F/0F	D#0	4E				7FH : ON 00H : OFF
FLANGER	SW/LED	10/10	E0	4F	10/10	E0	4F				7FH : ON 00H : OFF
HOLD	SW/LED	11/11	F0	50	11/11	F0	50				7FH : ON 00H : OFF
FILTER	SW/LED	12/12	F#0	51	12/12	F#0	51				7FH : ON 00H : OFF
SKID	SW/LED	13/13	G0	52	13/13	G0	52				7FH : ON 00H : OFF
RATIO Y	SW/LED	14/14	G# 0	53	14/14	G#0	53				7FH : ON 00H : OFF
%/ 16	SW/LED	15/15	A0	54	15/15	A0	54				7FH : ON 00H : OFF
◀	SW	16		55	16		55				7FH : ON 00H : OFF
▶	SW	17		56	17		56				7FH : ON 00H : OFF
A.Cue scratch	SW/LED	18/18	C1	57	18/18	C1	57				7FH : ON 00H : OFF
VINYL	SW/LED	19/19	C#1	58	19/19	C#1	58				7FH : ON 00H : OFF
CDJ	SW/LED	1A/1A	D1	59	1A/1A	D1	59				7FH : ON 00H : OFF
Time	SW	1B		5A	1B	D-1	5A				7FH : ON 00H : OFF
SGL/CTN	SW	1C		5B	1C		5B				7FH : ON 00H : OFF
🔒	SW/LED	1D/1D	F1	5C	1D/1D	F1	5C				7FH : ON 00H : OFF
JOG	SW/ENC	27/18		66/57	27/28		66/67				7FH : ON 00H : OFF
CUE ▶	SW	1E		5D	1E		5D				7FH : ON 00H : OFF
CUE	SW/LED	1F/1F	G1	5E	1F/1F	G1	5E				7FH : ON 00H : OFF
▶	SW/LED	20/20	G# 1	5F	20/20	G#1	5F				7FH : ON 00H : OFF
TAP	SW/LED	21/21	A1	60	21/21	A1	60				7FH : ON 00H : OFF
—	SW	22		61	22		61				7FH : ON 00H : OFF

+	SW	23		62	23		62				7FH : ON 00H : OFF
Pitch Silder	VR/CENTER	PITCH BEND/28		67	PITCH BEND/28		67				7FH : ON 00H : OFF
GAIN	VR	11		50	21		60				VR:00~7F
HIGH	VR/SW/CENTER/LED	12/24/29/24	C2	51/63/68	22/24/29/24	C2	61/63/68				VR:00~7F
MID	VR/SW/CENTER/LED	13/25/2A/25	C#2	52/64/69	23/25/2A/25	C#2	62/64/69				VR:00~7F
LOW	VR/SW/CENTER/LED	14/26/2B/26	D2	53/65/6A	24/26/2B/26	D2	63/65/6A				VR:00~7F
Channel Fader	VR	10		4F	20		5F				VR:00~7F
U2	LED	2C	G#2		2C	G#2					7FH : ON 00H : OFF
10	LED	2D	A2		2D	A2					7FH : ON 00H : OFF
6	LED	2E	A#2		2E	A#2					7FH : ON 00H : OFF
LEVEL METER LED	LEVEL METER LED	1			1						<b>00H~7FH*</b>
RELAY	SW/LED							37/37	G3	76	7FH : ON 00H : OFF
MASTER METER	SW/LED							38/38	G#3	77	7FH : ON 00H : OFF
MASTER	VR							31		70	VR:00~7F
BOOTH	VR							32		71	VR:00~7F
Cross Fader	VR/SW/SW/CENTER							30/08/09/0A		6F/47/48/49	VR:00~7F
MIC1 LEVEL	VR							35		74	VR:00~7F
MIC2 LEVEL	VR							36		75	VR:00~7F
CUE PAN SLIDER	VR							34		73	VR:00~7F
CUE PAN LEVEL	VR							33		72	VR:00~7F

Fader Start ON(L)	SW							1		40	7FH : ON 00H : OFF
Fader Start OFF(L)	SW							2		41	7FH : ON 00H : OFF
Fader Start ON(R)	SW							3		42	7FH : ON 00H : OFF
Fader Start OFF(R)	SW							4		43	7FH : ON 00H : OFF
C.F CURVE (L)	SW							7		46	7FH : ON 00H : OFF
C.F CURVE (CENTER)	SW							6		45	7FH : ON 00H : OFF
C.F CURVE (R)	SW							5		44	7FH : ON 00H : OFF

---

## CC-ABSOLUTE (VR, LEVEL METER LED) TYPE

Control Change messages are sent with status 0xBn, where n is the channel, for the specified CC controller. Thus the controller MIDI ID is indicated with the channel along with the CC number. The value from 0x00 to 0x7F, directly related to the location of the controller.

### \* LEVEL METER LEDS

00~0B => ALL LEDS OFF

0C~17=>LED(-30) ON

18~23=>LED(-30, -20) ON

24~2F=>LED(-30, -20, -10) ON

30~3B=>LED(-30, -20, -10, -7) ON

3C~47=>LED(-30, -20, -10, -7, -4) ON

48~53=>LED(-30, -20, -10, -7, -4, -2) ON

54~5F=>LED(-30, -20, -10, -7, -4, -2, 0) ON

60~6B=>LED(-30, -20, -10, -7, -4, -2, 0, +2) ON

6C~77=>LED(-30, -20, -10, -7, -4, -2, 0, +2, +4) ON

78~7F=> ALL LEDS ON (-30, -20, -10, -7, -4, -2, 0, +2, +4, +7)

## CC-RELATIVE (ENC)TYPE

Control Change messages are status 0xBn, where n is the channel, for the specified CC controller. Thus the controller MIDI ID is indicated with the channel along with the CC number. The value from 0x40 to indicate the change in the controller. This is an offset to 0x40 "one's complement" notation.

A message with data 0x43 indicates a **positive** change of 3.

A messages with data 0x31 indicates a **negative** change of 15.

### SWITCH ON/OFF (SW,CENTER BLUE)

These messages are used for switches.

Control Change messages are sent with status 0x9n, SWITCH On and Off value are 0x7F and 0x00, where n is the channel.

### LED ON/OFF (LED TYPE)

These messages are used for LED.

Control Change messages are sent with status 0x9n, LED On and Off value are 0x7F and 0x00, where n is the channel.

---



---

**FOR MORE INFORMATION ON CITRONIC PRODUCTS VISIT**

**[WWW.CITRONIC.COM](http://WWW.CITRONIC.COM)**

Copyright protected by Citronic UK

---